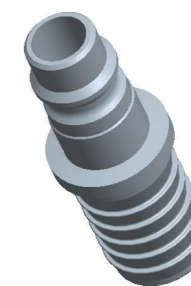
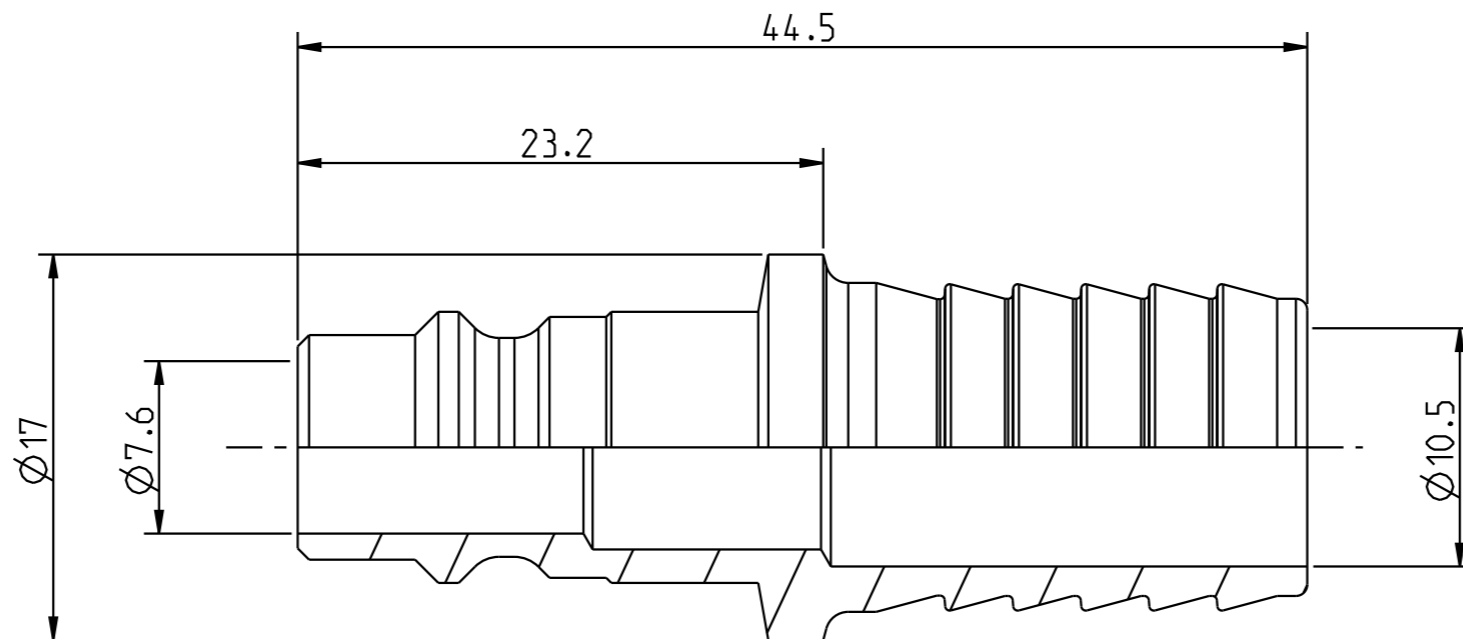
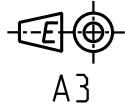


Diese Zeichnung darf weder ganz noch teilweise ohne unsere ausdrückliche Genehmigung kopiert oder auf andere Weise vervielfältigt werden. Alle Rechte vorbehalten.

Denna handling får ej utan vårt medgivande delges annan, kopieras eller eljest obehörigen användas. Överlåtelse härvid beivras med stöd av gällande lag. This document must not be copied, either completely or in part, without permission. Any infringement will have legal consequences.



1:1

Product no: 10_320_5005

Max working pressure:	16	bar connected
		bar disconnected
Min burst pressure:	140	bar connected
	-	bar disconnected
Sealing material:		
Temperatur range:	-20°C - +100 °C	
Nominal flow diameter, DN:	7,6	mm
Connection	Hose 1/2" 13,0mm	
Connection stroke:	-	mm

1	1	Nipple	Steel, Hard., Zn 8 Silver
Detalj Item	Antal Quant.	Benämning Description	Material Material

CEJN	Skala Scale	3:1	Ritad Drawn	JoOl	Kontr. Checked	LHe	Godk. Appr.	OG	M nr. Alt. no.	-	Dat. Date	120613
	Assembly drawing		Ritning nr./Drawing No.				50_320_5005		Utg./Issue		AA	